

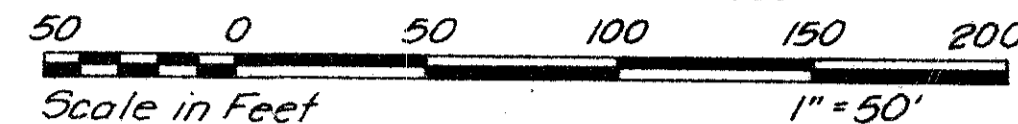
46/63

GARDENS IN THE GROVE

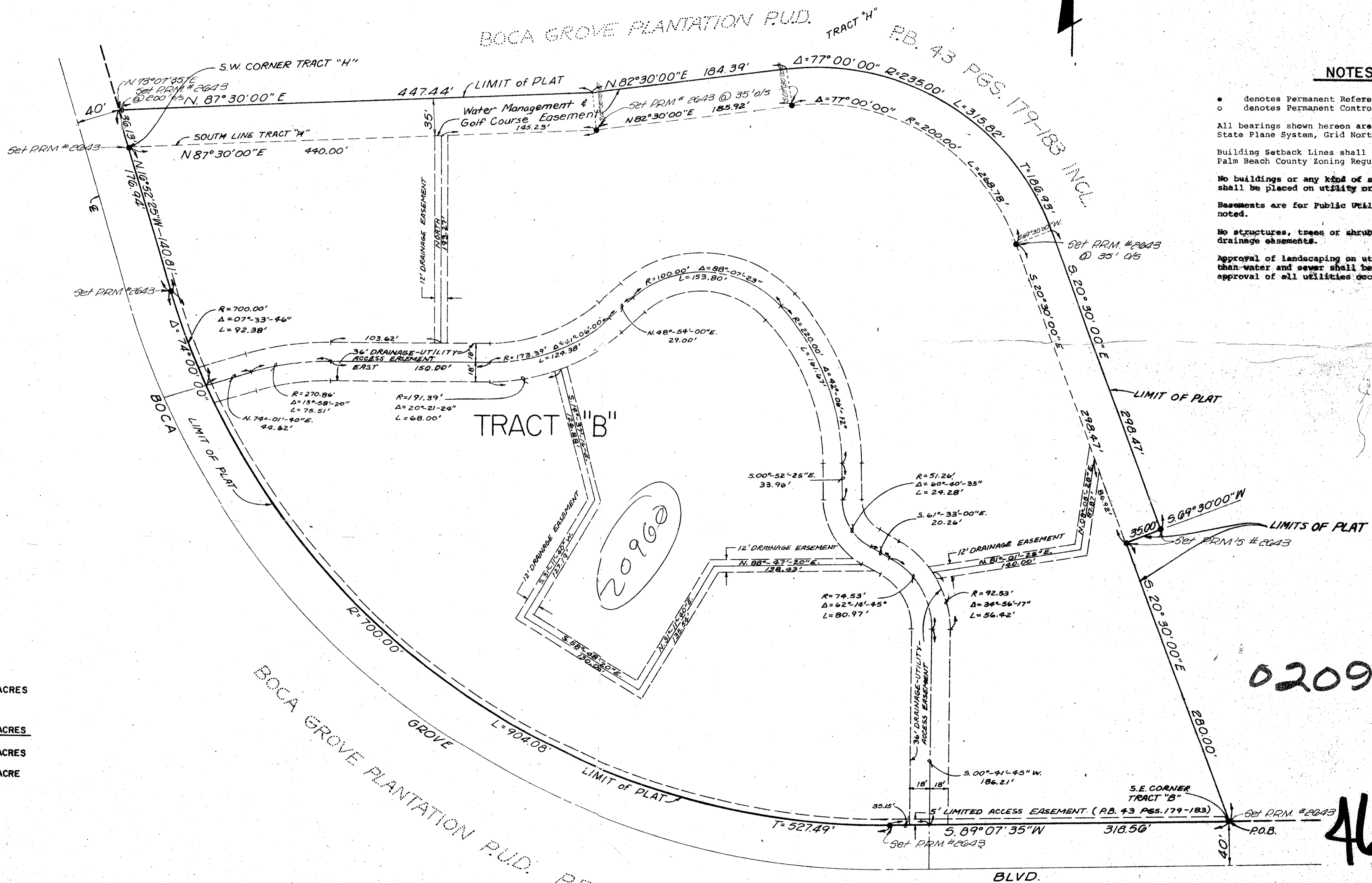
Being a replat of "TRACT B" and part of "TRACT H" in BOCA GROVE PLANTATION P.U.D., recorded in Plat Book 43, Pages 179 through 183, inclusive, Public Records of Palm Beach County, Florida

IN PART OF SECTION 21, TOWNSHIP 47 SOUTH, RANGE 42 EAST
PALM BEACH COUNTY, FLORIDA
IN 2 SHEETS SHEET NO. 2

GEE & JENSON
ENGINEERS - ARCHITECTS - PLANNERS, INC.
WEST PALM BEACH, FLORIDA
APRIL 1983



STATE OF FLORIDA
COUNTY OF PALM BEACH
This plat was filed for record at _____ M, this _____ day of _____, 1983, and duly recorded in Plat Book No. _____ on Page _____.
JOHN B. DUNKLE
Clerk Circuit Court
By: _____ D.C.



NOTES

- denotes Permanent Reference Monument.
 - o denotes Permanent Control Point.
- All bearings shown hereon are relative to Florida State Plane System, Grid North.
- Building Setback Lines shall be as required by Palm Beach County Zoning Regulations.
- No buildings or any kind of structure construction shall be placed on utility or drainage easements.
- Easements are for Public Utilities unless otherwise noted.
- No structures, trees or shrubs shall be placed on drainage easements.
- Approval of landscaping on utility easements other than water and sewer shall be only with the approval of all utilities occupying same.

LAND USE

TRACT "B"	11.15 ACRES
WATER MANAGEMENT AND GOLF COURSE EASEMENT	0.98 ACRES
TOTAL	12.13 ACRES
DENSITY (174 UNITS)	14.34/ACRE

20960

0209-301

46/63

GARDENS IN THE GROVE